

WIBIDA

BOARD OF DIRECTORS

PRESIDENT

Tammy Tillotson

VICE PRESIDENT

SECRETARY

Patti Huse

TREASURER

Kimberly Chan

Sara Adamovich, Eagle River, WI

Jayne Black, DePere, WI

Loucracia Carson, Milwaukee, WI

Connie Day, Appleton, WI

Pat Dunham, Grafton, WI

Vicki Dunham, Franklin, WI

Laura Kulp, Stratford, WI

Darlene Larson, Wausau, WI

Ann Malone, Madison, WI

Kelly Steinke, Appleton, WI

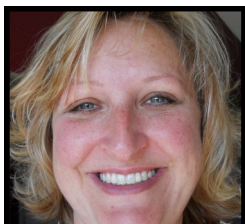
Libby Wallace, Menomonie, WI

Please reference the WIBIDA website, www.wibida.org for member biographies.

IN THIS ISSUE:

President's Message	1
Upcoming Events	2
Board Members	2
2016 Conference Info	3
Team Quest	4

A Message from the President...



Tammy Tillotson
President

Happy Holidays!!!

With Thanksgiving behind us, we are reminded of how thankful we are for the positive things happening in Wisconsin and all those who have worked tirelessly to raise awareness

about dyslexia. With the new year fast approaching, we look to the future and consider how we can improve upon what has been done. Our Conference and Education Committee is gearing up for the Annual State Conference to be held April 23, 2016 in Marshfield, WI, as well as the Regional Conference to be held in Wisconsin Dells in September, 2016. We hope that you will mark your calendars and plan to join us. Our Governmental Affairs Committee has been working to connect with key legislators. Our Resource

and Referral Committee continues to gather information about resources available throughout the state to share with those in need. Our Membership and Communications Committee has worked to improve member communications with more regular information sent out. We have also expanded our social media exposure with our Facebook page, Pinterest account, Twitter, and LinkedIn. We invite you to find and like/follow us to stay current on the latest happenings. Our home office has been working toward developing a certification exam and training, as well as partnering with Rock N Roll Marathons to create Team Quest: Until Everyone Reads racing. We invite you or anyone you know to register today to be part of the race fun. We are sad to be losing Connie Day on our Board of Directors but thrilled to have many new members who have joined us in leading the way.

~ Tammy Tillotson



Connie Day

Outgoing board member Connie Day could be described as a mom on a mission, a tenacious teacher, an awesome advocate, or any other number of positive attributes! Connie has been a long-standing dynamo on the Wisconsin branch of the International Dyslexia Association board of directors and though her term is ending, her involvement, dedication, and passion is not. As the driving force for gathering information for referrals to professional evaluators, tutors, and trainings, Connie made it her personal mission to make sure that others had resources and information available that was not available to her as she navigated the peaks and valleys of parenting a child with dyslexia. Connie will continue to be a force of good in the state through her involvement on the conference committee and continued voice of advocacy and awareness. We are honored to have served with her on the board and look forward to new adventures with her in other capacities.

Thanks for all your service Connie!!!

WIBIDA

UPCOMING EVENTS:

WISCONSIN BRANCH OF
THE INTERNATIONAL
DYSLEXIA ASSOCIATION
2016 Annual Conference
April 23, 2016
Marshfield, Wisconsin
www.wibida.org

REGIONAL IDA
CONFERENCE
October, 2016
Wisconsin Dells, Wisconsin

*Check our website for more
information:
www.wibida.org*

CONTACT WIBIDA:

www.wibida.org
Voicemail: 608-355-0911
Email: wibida@gmail.com

*Click the icon to follow us on
Facebook, Pinterest, and Twitter*



2016 Board Members

*Below is a listing and email contact information
for each of WIBIDA's current board members.
For more information on each board member,
please visit www.wibida.org*

Tammy Tillotson, *President*, Chippewa Falls - tammyt1@charter.net

Pattie Huse, *Secretary*, Eau Claire - phuse2146@charter.net

Kimberly Chan, *Treasurer* - kchan@edgewood.edu

Sara Adamovich, Eagle River - adamovichfamily@gmail.com

Jayne Black, De Pere - jayne.black@gmail.com

Loucricia Carson, Milwaukee - lmcarson@uwm.edu

Pat Dunham, Grafton - pkadubeck@att.net

Vicki Dunham, Franklin - danvicama@wi.rr.com

Laura Kulp, Stratford - laura.kulp7@gmail.com

Darlene Larson, Wausau - read.spell@gmail.com

Ann Malone, Madison - amread102@gmail.com

Kelly Steinke, Appleton - ksteinke@readlearningservices.com

Libby Wallace, Menomonie - libbywallace@sbcglobal.net

Do you suspect *Dyslexia?*
We can help!

DONATE TODAY!

The Wisconsin Branch of the International Dyslexia Association (WIBIDA) is an all volunteer organization dedicated to serving the state of Wisconsin. We work hard to expand the awareness and educate people about quality literacy instruction and we support teacher and professional training in the science in reading, dyslexia, and other reading disabilities. Often times, the International Dyslexia Association and WIBIDA are the first sites visited when a parent finds out their child has dyslexia or is struggling in reading. We need all of our members and others to help us meet our goals. With your tax deductible contributions, we will be able to do even more to help teachers, parents, literacy advocates, and other professionals improve their skills and meet the needs of our struggling readers. Donate today!

Go to www.wibida.org to donate through our PayPal site.

**Thank you
for your support!**

Visit

www.wibida.org

for the most up-to-date
information about

WIBIDA

events and
helpful resources.

WIBIDA

Spring Conference

Moving Literacy Forward Together



William VanCleave

SAVE THE DATE: April 23, 2016 Hotel Marshfield, Marshfield, WI

Please join us for the spring conference of the **Wisconsin Branch** of the **International Dyslexia Association** hosting Keynote Speaker & Session Presenter, William VanCleave.

William VanCleave is in private practice as an educational consultant whose specialties include morphology and written expression. A nationally recognized speaker, he has presented on effective teaching practices at conferences

and schools around the country since 1995. While his own background is in language-based learning difficulties, the strategies William promotes are effective for students of all skill levels and abilities. His high level of enthusiasm and energy, his interactive style, and his passion for working with teachers make him an effective presenter, whether he is visiting a school and sharing with its faculty or presenting at a national conference. He has provided professional development at state education conferences; dyslexia and learning disabilities conferences; E.L.L. conferences; and private and public schools, both remedial and mainstream.

In 2004 William published the first edition of *Everything You Want To Know & Exactly Where To Find It*, an Orton-Gillingham based reference guide. Now in its fourth edition, this manual serves tutors and teachers of struggling readers and spellers around the country. In the fall of 2013, he and co-author Caroline Dover published *Phrases & Sentences for Reading & Spelling*, a companion to the *Everything* text. In the spring of 2012, William completed *Writing Matters: Developing Sentence Skills in Students of All Ages*. Schools in the public and private school arenas have adopted his methodology, and his writing approach is used by both one-on-one language therapists and classroom teachers.

In addition to workshops at conferences, schools, and districts around the country, William has recently been fortunate enough to participate in several interesting projects. He has provided professional development through a S.I.G. grant at See-Worth Academy in Oklahoma City, OK. In addition, he is currently on an RtII Committee devising writing standards for Pennsylvania. He is also writing a series of workbooks to complement the Writing Matters approach, designing a new sentence expansion card game, and beginning a long-awaited reference guide for teaching composition skills.

During his career William has tutored; taught literature, writing, and math; and held several administrative posts. He continues to tutor privately in Greenville, South Carolina as well as over Skype. He received his B.A. in English and Women's Studies from The College of Wooster and earned his M.A. in English from S.U.N.Y. New Paltz.

***More information will be coming in early January.
Please check our website for updates.***

TeamQuest

Until everyone can read.

TeamQuest is an endurance training and fundraising program that will change your life and the lives of others!

TeamQuest, the endurance training and fundraising program of the **International Dyslexia Association**, kicks off its partnership with the Rock'n'Roll Marathon Series as a Charity Partner with the Rock'n'Roll Liverpool Marathon & 1/2 Marathon on May 29, 2016. Together with the Suja Rock 'n' Roll San Diego Marathon & 1/2 Marathon on June 5, 2016, these premier events offer expense paid participation in destination events worldwide and create a better future for children and adults with dyslexia. Participate on site or virtually!

WIBIDA, in partnership with the home office of IDA, is currently recruiting participants to join TeamQuest! Team members will train for and participate in one of several major endurance sporting events this spring/summer. TeamQuest is a proud to launch its partnership with the *Rock 'n' Roll* Charity Partner Program giving team members opportunities to take part in great destination events worldwide. Participants will their favorite from our spring season: San Diego Marathon and Half Marathon and Liverpool Marathon and Half Marathon. Other events including cycling and climbing will be offered in the fall. Participants in TeamQuest will achieve their own fitness goals while creating a better future for children and adults with dyslexia. Team members raise funds for the IDA to earn the privilege of participating in some of the country's most prestigious events.

Participants will receive:

- Guaranteed entry to the selected event paid by the IDA
- Expert endurance training and coaching, regular group trainings and team meetings

- Fundraising support including online personal fundraising pages and sample letters and other creative fundraising ideas
- Team gear, including a race-day singlet and Team T shirt
- Expenses paid weekend at a great destination event including race registration fees, lodging, team pasta party and post-race celebration.

Each individual who joins the Team will pay an initial registration fee as part of the registration process of \$100. All participants will agree to a fundraising commitment minimum equal to four times the costs of hotel accommodations and other expenses related to supporting the team. For example, costs for hotel accommodations and other related expenses for the San Diego Marathon are \$700 for each participant. We will establish a fundraising minimum of \$2,800. The initial registration fee plus their travel to and from the event city are the only expenses for individual participants unless they choose to pay a portion of their fund raising minimum themselves.

During your customized training program, you will make new friends and accomplish things you never thought possible. No matter what your fitness level, you will train for a rewarding and exciting endurance event at one of the great destination events worldwide while raising money to help children and adults with dyslexia and other reading difficulties.

TeamQuest members receive great coaching, achieve and surpass personal and life changing goals, and meet incredible people. Besides having fun, you'll be raising money for a great cause—helping everyone to read.

PARTICIPATING ... Until everyone can read

For more information: <https://eida.org/teamquest-launches-internationally/>

Register today at www.teamquestdyslexia.org to join a team.